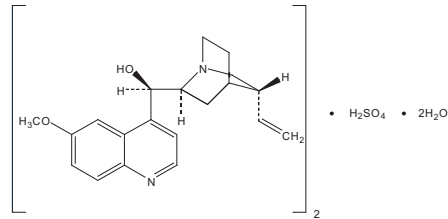


Rx only

QUALAQUIN®
quinine sulfate
CAPSULES USP, 324 mg

DESCRIPTION
Quinine (quinine sulfate) is an antimalarial drug chemically described as cinchonin-9-ol, 6'-methoxy-, (8*α*, 9*R*)-, sulfite (2:1) (salt), dihydrate with a molecular formula of (C₂₀H₂₄N₂O₂)₂·H₂SO₄·2H₂O and a molecular weight of 782.96. The structural formula of quinine sulfate is:



Quinine sulfate occurs as a white, crystalline powder that darkens on exposure to light. It is odorless and has a persistent very bitter taste. It is only slightly soluble in water, alcohol, chloroform, and ether. Quinine sulfate is supplied for oral administration as capsules containing 324 mg of the active ingredient quinine sulfate USP, equivalent to 269 mg free base. Inactive ingredients: corn starch, magnesium stearate, and talc.

CLINICAL PHARMACOLOGY
Pharmacokinetics:

Absorption: The oral bioavailability of quinine is 76 to 88% in healthy adults. Quinine exposure is higher in patients with malaria than in healthy subjects. After a single oral dose of quinine sulfate, the mean quinine T_{max} was longer, and mean AUC and C_{max} were higher in patients with uncomplicated *P. falciparum* malaria than in healthy subjects, as shown in Table 1 below.

TABLE 1
Pharmacokinetic Parameters of Quinine in Healthy Volunteers and Patients with Uncomplicated *P. falciparum* Malaria after a Single Dose^a of Oral Quinine Sulfate Capsules

PHARMACOKINETIC PARAMETER	Healthy Subjects (N = 23) Mean ± SD	Uncomplicated <i>P. falciparum</i> Malaria Patients (N = 15) Mean ± SD
Dose (mg/kg) ^a	8.7	10
T _{max} (h)	2.8 ± 0.8	5.9 ± 4.7
C _{max} (mcg/mL)	3.2 ± 0.7	8.4
AUC ₀₋₁₂ (mcg·h/mL)	28.0	73.0

^aQuinine Sulfate dose was 648 mg (approximately 8.7 mg/kg) in healthy subjects; and 10 mg/kg in patients with malaria

Quinine capsules may be administered without regard to meals. When a single oral 324 mg capsule of Qualequin was administered to healthy volunteers (N=26) with a standardized high-fat breakfast, the mean T_{max} of quinine was prolonged to about 4.0 hours, but the mean C_{max} and AUC₀₋₂₄ were similar to those achieved when Qualequin capsules were given under fasting conditions (See **DOSE AND ADMINISTRATION**). Distribution: In patients with malaria, the volume of distribution (Vd/I) decreases in proportion to the severity of the infection. In published studies with healthy subjects who received a single oral 600 mg dose of quinine sulfate, the mean Vd/I ranged from 2.5 to 7.1 L/kg. Quinine is moderately protein-bound in blood in healthy subjects, ranging from 69 to 92%. During acute malarial infection, protein binding of quinine is increased to 78 to 95%, corresponding to the increase in α₂-acid glycoprotein in malarial infection. Intra-erythrocytic levels of quinine are approximately 30 to 50% of the plasma concentration. Quinine penetrates relatively poorly into the cerebrospinal fluid (CSF) in patients with cerebral malaria, with CSF concentration approximately 2 to 7% of plasma concentration.

In one study, quinine concentrations in placental cord blood and breast milk were approximately 32% and 31%, respectively, of quinine concentrations in maternal plasma. The estimated total dose of quinine secreted into breast milk was less than 2 to 3 mg per day (See **Pregnancy and Nursing Mothers**). Metabolism: Quinine is metabolized almost exclusively via hepatic oxidative cytochrome P450 (CYP) pathways, resulting in four primary metabolites, 3-hydroxyquinine 2'-quinone, O-desmethylquinine, and 10,11-dihydroxydihydroquinine. Six secondary metabolites result from further biotransformation of the primary metabolites. The major metabolite, 3-hydroxyquinine, is less active than the parent drug. The CYP isoenzyme pathways involved in quinine metabolism are not completely elucidated, but it is known that the formation of 3-hydroxyquinine is mediated mainly by CYP3A4 and to a minor extent, by CYP2C19. Therefore, co-administration of drugs that inhibit CYP3A4 may result in an increase in plasma quinine concentrations, whereas co-administration of drugs that induce CYP3A4 may decrease plasma quinine concentrations (See **WARNINGS, PRECAUTIONS/Drug Interactions**). Elimination: Quinine is eliminated primarily via hepatic biotransformation. Approximately 20% of quinine is excreted unchanged in urine. Because quinine is reabsorbed when the urine is alkaline, renal excretion of the drug is twice as rapid when the urine is acidic than when it is alkaline. In various published studies, healthy subjects who received a single oral 600 mg dose of quinine sulfate exhibited a mean plasma clearance ranging from 0.08 to 0.47 L/h/kg (median value: 0.17 L/h/kg) with a mean plasma elimination half-life of 9.7 to 12.5 hours.

In 15 patients with uncomplicated malaria who received a 10 mg/kg oral dose of quinine sulfate, the mean total clearance of quinine was slower (approximately 0.09 L/h/kg) during the acute phase of the infection, and faster (approximately 0.16 L/h/kg) during the recovery or convalescent phase.

Extracorporeal elimination:

Administration of multiple-dose activated charcoal (50 grams administered 4 hours after quinine dosing followed by 3 further doses over the next 12 hours) decreased the mean quinine elimination half-life from 8.2 to 4.6 hours, and increased the mean quinine clearance by 56% (from 11.8 L/h to 18.4 L/h) in 7 healthy adult volunteers who received a single oral 600 mg dose of quinine sulfate. Likewise, in 5 symptomatic patients with acute quinine poisoning who received multiple-dose activated charcoal (50 grams every 4 hours), the mean quinine elimination half-life was shortened to 8.1 hours in comparison to a half-life of approximately 26 hours in patients who did not receive activated charcoal (See **OVERDOSAGE**). In 6 patients with quinine poisoning, forced acid diuresis did not change the half-life of quinine elimination (25.1 ± 4.6 hours vs. 26.5 ± 5.8 hours), or the amount of unchanged quinine recovered in the urine, in comparison to 8 patients not treated in this manner (See **OVERDOSAGE**).

Special Populations:

Pediatrics: The pharmacokinetics of quinine in children (1.5 to 12 years old) with uncomplicated *P. falciparum* malaria appear to be similar to that seen in adults with uncomplicated malaria. Furthermore, as seen in adults, the mean total clearance and the volume of distribution of quinine were reduced in pediatric patients with malaria as compared to the healthy pediatric controls. Table 2 below provides a comparison of the mean ± SD pharmacokinetic parameters of quinine in pediatric patients vs. healthy pediatric controls.

TABLE 2
Quinine Pharmacokinetic Parameters Following the First 10 mg/kg Quinine Sulfate Oral Dose in Pediatric Patients (age 1.5 to 12 years) with Acute Uncomplicated *P. falciparum* Malaria versus Healthy Pediatric Controls

PHARMACOKINETIC PARAMETER	<i>P. falciparum</i> malaria patients (n = 15) Mean ± SD	Healthy pediatric controls (n = 5) Mean ± SD
T _{max} (h)	4.0	2.0
C _{max} (mcg/mL)	7.5 ± 1.1	3.4 ± 1.18
Half-life (h)	12.1 ± 1.4	3.2 ± 0.3
Total CL (L/h/kg)	0.06 ± 0.01	0.30 ± 0.04
Vd (L/kg)	0.87 ± 0.12	1.43 ± 0.18

Geriatrics: Following a single oral dose of 600 mg quinine sulfate, the mean AUC was about 38% higher in 8 healthy elderly subjects (65 to 78 years old) than in 12 younger subjects (20 to 35 years old). The mean T_{max} and C_{max} were similar in elderly and younger subjects after a single oral dose of quinine sulfate (600 mg). The mean oral clearance of quinine was significantly decreased, and the mean elimination half-life was significantly increased in elderly subjects compared with younger subjects (0.06 vs. 0.08 L/h/kg, and 18.4 hours vs. 10.5 hours, respectively). Although there was no significant difference in the renal clearance of quinine between the two age groups, elderly subjects excreted a larger proportion of the dose in urine as unchanged drug than younger subjects (16.6% vs. 11.2%). Despite these pharmacokinetic changes, an alteration in the Qualequin dosage regimen in elderly patients is not needed.

Hepatic impairment: In otherwise healthy subjects with moderate hepatic impairment (Child-Pugh B; N=9) who received a single oral 600 mg dose of quinine sulfate, the mean AUC increased by 55% without a significant change in mean C_{max}, as compared to healthy volunteer controls (N=6). In subjects with hepatitis, the absorption of quinine was prolonged, the elimination half-life was increased, the apparent volume of distribution was higher, but there was no significant difference in weight-adjusted clearance. Therefore, in patients with mild to moderate hepatic impairment, dosage adjustment is not needed, but patients should be monitored closely for adverse effects of quinine (See **DOSE AND ADMINISTRATION**). No pharmacokinetic data are available for patients with severe hepatic impairment (Child-Pugh C).

Renal impairment: Following a single oral 600 mg dose of quinine sulfate in otherwise healthy subjects with severe chronic renal failure not receiving any form of dialysis (mean serum creatinine = 9.5 mg/dL), the median AUC was higher by 195% and the median T_{max} was higher by 79% than in subjects with normal renal function (mean serum creatinine = 1 mg/dL). The mean plasma half-life in subjects with severe chronic renal impairment was prolonged to 26 hours compared to 9.7 hours in the healthy controls. Computer assisted modeling and simulation indicates that in patients with malaria and severe chronic renal failure, a dosage regimen consisting of one loading dose of 648 mg Qualequin followed 12 hours later by a maintenance dosing regimen of 324 mg every 12 hours will provide adequate exposure to quinine (See **DOSE AND ADMINISTRATION**). The effects of mild and moderate renal impairment on the pharmacokinetics and safety of quinine sulfate are not known. Negligible to minimal amounts of circulating quinine in the blood are removed by hemodialysis or hemofiltration. In subjects with chronic renal failure (CRF) on hemodialysis, only about 6.5% of quinine is removed in 1 hour. Plasma quinine concentrations do not change during or shortly after hemofiltration in subjects with CRF (See **OVERDOSAGE**).

Electrocardiogram:

QTc interval prolongation was evaluated in a crossover pharmacokinetic study in healthy volunteers (N=24) who received single oral doses of Qualequin (324 mg and 648 mg). The mean ± SD maximum QTc change from baseline around the quinine T_{max} was 10 ± 19 msec and 12 ± 18 msec, respectively for the 324 mg and 648 mg doses. There were no subjects who had a QTc interval greater than 500 msec, or had a maximum QTc change from baseline of greater than 60 msec (See **WARNINGS**).

Microbiology

Mechanism of Action: Quinine inhibits nucleic acid synthesis, protein synthesis, and glycolysis in *Plasmodium falciparum* and can bind with hemazoin in parasitized erythrocytes. However, the precise mechanism of the antimalarial activity of quinine sulfate is not completely understood.

Activity In Vitro and In Vivo: Quinine sulfate acts primarily on the blood schizont form of *P. falciparum*; quinine sulfate has little effect on the sporozoite or pre-erythrocytic forms.

Drug Resistance: Strains of *P. falciparum* with decreased susceptibility to quinine can be selected in vivo. *P. falciparum* malaria that is clinically resistant to quinine has been reported in some areas of South America, Southeast Asia, and Bangladesh.

INDICATIONS AND USAGE

Treatment of Malaria: Qualequin is indicated only for treatment of uncomplicated *Plasmodium falciparum* malaria. Quinine sulfate has been shown to be effective in geographical regions where resistant chloroquine has not been documented (See **CLINICAL STUDIES**). Qualequin oral capsules are not approved for patients with severe or complicated *P. falciparum* malaria. Qualequin oral capsules are not approved for prevention of malaria.

Qualequin oral capsules are not approved for the treatment or prevention of nocturnal leg cramps.

CONTRAINDICATIONS

Prolonged QT Interval

Qualequin is contraindicated in patients with a prolonged QT interval. One case of a fatal ventricular arrhythmia was reported in an elderly patient with a prolonged QT interval at baseline, who received quinine sulfate intravenously for *P. falciparum* malaria (See **WARNINGS**).

Glucose-6-Phosphate Dehydrogenase Deficiency

Qualequin is contraindicated in patients with glucose-6-phosphate dehydrogenase (G-6-PD) deficiency (See **WARNINGS**).

Myasthenia Gravis

Qualequin is contraindicated in patients with myasthenia gravis (See **WARNINGS**).

Hypersensitivity

Qualequin is contraindicated in patients with known hypersensitivity to quinine. Qualequin is also contraindicated in patients with known hypersensitivity to mefloquine or quinidine because cross-sensitivity to quinine has been documented (See **PRECAUTIONS**).

Qualequin is contraindicated in patients with a history of potential hypersensitivity reactions associated with previous quinine use. These include, but are not limited to the following:

- Thrombotic thrombocytopenic purpura (TTP) or hemolytic uremic syndrome (HUS)
- Thrombocytopenia
- Blackwater fever (acute intravascular hemolysis, hemoglobinuria, and hemoglobinemia)
- See **PRECAUTIONS**.

Optic Neuritis

Qualequin is contraindicated in patients with optic neuritis (See **ADVERSE REACTIONS**).

WARNINGS

Use of Qualequin for Treatment or Prevention of Nocturnal Leg Cramps

Qualequin may cause unpredictable serious and life-threatening hypersensitivity reactions, QT prolongation, serious cardiac arrhythmias including torsades de pointes, and other serious adverse effects requiring medical intervention and hospitalization. Fatalities have also been reported. The risk associated with the use of Qualequin in the absence of evidence of its effectiveness for treatment or prevention of nocturnal leg cramps, outweighs any potential benefit in treating and/or preventing this benign, self-limiting condition (See **CONTRAINDICATIONS, PRECAUTIONS, and ADVERSE REACTIONS**).

QT Prolongation and Ventricular Arrhythmias

Qualequin is contraindicated in patients with a documented or suspected finding in studies which evaluated electrocardiographic changes with oral or parenteral quinine administration, regardless of age, clinical status, or severity of disease. The maximum increase in QT interval has been shown to correspond with peak quinine plasma concentration (See **CLINICAL PHARMACOLOGY/Electrocardiogram**). Quinine sulfate has been rarely associated with potentially fatal cardiac arrhythmias, including torsades de pointes, and ventricular fibrillation. Qualequin is not recommended for use with other drugs known to cause QT prolongation, including Class I antiarrhythmic agents (e.g., quinidine, procainamide, disopyramide), and Class III antiarrhythmic agents (e.g., amiodarone, sotalol, dofetilide).

Quinine may also inhibit the metabolism of other drugs that are CYP3A4 substrates known to cause QT prolongation, such as astemizole, cisapride, terfenadine, pimozone, halofantrine and quinidine. Torsades de pointes has been reported in patients who received concomitant quinine and astemizole. Therefore, concomitant use of Qualequin with these medications, or drugs with similar properties, should be avoided (See **PRECAUTIONS/Drug Interactions**).

Concomitant administration of Qualequin with the antimalarials drugs, mefloquine or halofantrine, may result in electrocardiographic abnormalities, including QT prolongation, and increase the risk for torsades de pointes or other serious ventricular arrhythmias. Concurrent use of Qualequin and mefloquine may also increase the risk of seizures (See **PRECAUTIONS/Drug Interactions**).

Concomitant use of Qualequin with erythromycin should be avoided in patients receiving Qualequin. Fatal torsades de pointes was reported in an elderly patient who received concomitant quinine, erythromycin, and dopamine. Although a causal relationship between a specific drug and the arrhythmia was not established in this case, erythromycin is a CYP3A4 inhibitor and could potentially increase quinine plasma levels when used concomitantly. A related macrolide antibiotic, troleanandomycin, has been shown to increase quinine exposure in a pharmacokinetic study (See **PRECAUTIONS/Drug Interactions**). Qualequin should also be avoided in patients with known prolongation of QT interval (See **CONTRAINDICATIONS**), in elderly patients, and in patients with clinical conditions known to prolong the QT interval, such as uncorrected hypokalemia, bradycardia, and certain cardiac conditions.

Concomitant Use of Rifampin

Treatment failures may result from the concurrent use of rifampin with Qualequin, due to decreased plasma concentrations of quinine, and concomitant use of these medications should be avoided (See **PRECAUTIONS/Drug Interactions**).

Glucose-6-Phosphate Dehydrogenase (G-6-PD) Deficiency:

Hemolysis and hemolytic anemia can occur in patients with G-6-PD deficiency who receive quinine. Qualequin should be stopped immediately upon the appearance of evidence of hemolysis (See **CONTRAINDICATIONS**).

Quinine sulfate has neuromuscular blocking activity, and may exacerbate muscle weakness in patients with myasthenia gravis (See **CONTRAINDICATIONS**).

Neuromuscular Blocking Agents

The use of neuromuscular blocking agents should also be avoided in patients receiving Qualequin. In one patient who received pancuronium during an operative procedure, subsequent administration of quinine resulted in respiratory depression and apnea. Although there are no clinical reports with succinylcholine or tubocurarine, quinine may also potentiate neuromuscular blockade when used with these drugs (See **PRECAUTIONS/Drug Interactions**).

PRECAUTIONS

Hypersensitivity:

Serious hypersensitivity reactions reported with quinine sulfate include anaphylactic shock, angioedema, urticaria, serious skin rashes, including Stevens-Johnson syndrome and toxic epidermal necrolysis, angioedema, facial edema, bronchospasm, and pruritus (See **CONTRAINDICATIONS**). A number of other serious adverse reactions reported with quinine, including thrombotic thrombocytopenic purpura (TTP) and hemolytic uremic syndrome (HUS), thrombocytopenia, immune thrombocytopenic purpura (ITP), blackwater fever, disseminated intravascular coagulation, leukopenia, neutropenia, granulomatous hepatitis, and acute interstitial nephritis may also be due to hypersensitivity reactions. Qualequin should be discontinued in case of any signs or symptoms of hypersensitivity (See **CONTRAINDICATIONS**).

Atrial Fibrillation and Flutter:

Qualequin should be used with caution in patients with atrial fibrillation or atrial flutter. A paradoxical increase in ventricular response rate may occur with quinine, similar to that observed with quinidine. If digoxin is used to prevent a rapid ventricular response, serum digoxin levels should be closely monitored, because digoxin levels may be increased with use of quinine (See **PRECAUTIONS/Drug Interactions**).

Hypoglycemia:

Quinine stimulates release of insulin from the pancreas, and patients, especially pregnant women, may experience clinically significant hypoglycemia.

Information for Patients

Patients should be instructed to:

- Take all of the medication as directed.
- Take no more of the medication than the amount prescribed.
- Take with food to minimize possible gastrointestinal irritation.

If a dose is missed, patients should also be instructed not to double the next dose. If more than 4 hours has elapsed since the missed dose, the patient should wait and take the next dose as previously scheduled. (See Patient Package Insert.)

Drug Interactions:

Effects of Drugs and Other Agents on Quinine Pharmacokinetics

Antacids: Antacids containing aluminum and/or magnesium may delay or decrease absorption of quinine. Concomitant administration of these antacids with Qualequin should be avoided.

Cholestyramine: In 8 healthy volunteers who received quinine sulfate 600 mg with or without 8 grams of cholestyramine resin, no significant difference in quinine pharmacokinetic parameters was seen. **CYP3A4 Inhibitors:** Erythromycin was shown to inhibit the metabolism of quinine *in vitro* using human liver microsomes. Therefore, concomitant administration of erythromycin with Qualequin is likely to increase plasma quinine concentrations, and should be avoided (See **WARNINGS**).

Patient Information:
QUALAQUIN®
quinine sulfate
CAPSULES USP 324 mg

This leaflet contains a summary of the most important information about Qualequin capsules and should be read completely before starting your treatment. This leaflet does not replace talking to your doctor or health care provider about your treatment or medical condition. If you have any questions about your treatment or medical condition, ask your doctor. Only your doctor or other health care provider can prescribe Qualequin and determine if it is right for you.

Malaria is a serious infection, and if not treated, can be life-threatening. Quinine Sulfate has been used for many years as an effective treatment for uncomplicated malaria caused by the parasite *Plasmodium falciparum*.

What is Qualequin?

Qualequin is a prescription medication used in the treatment of uncomplicated malaria caused by the parasite *Plasmodium falciparum*.

Qualequin is **NOT** approved for the prevention of malaria or for the prevention or treatment of night-time leg cramps.

Who should not take Qualequin?

Do not take Qualequin if you:

- Had previous allergic reactions to quinine, quinidine, or mefloquine (Lariam®).
- Had previous serious side effects to quinine, such as decreased platelets, which are components of blood necessary for clotting.
- Have low levels of an enzyme called Glucose-6-phosphate dehydrogenase (G-6-PD).
- Have myasthenia gravis.
- Have optic neuritis, which is an inflammation of the nerve important for vision.
- Have certain heart rhythm problems or certain inherited abnormalities on your electrocardiogram (ECG). Your doctor will tell you whether your ECG has these abnormalities.

What should I tell my doctor or health care provider before taking Qualequin?

Tell your doctor or health care provider:

- About *all your medical conditions*, including any heart, kidney, or liver problems.
- About all the prescription and non-prescription medications you are taking, including vitamins and herbal medications.
- If you are pregnant or could be pregnant. Treatment of malaria is important because it can be a serious disease for a pregnant woman and her unborn baby. Your doctor can tell you more about the benefits and risks of taking this medication during pregnancy for uncomplicated malaria. You and your doctor can decide if Qualequin is right for you.
- If you are breast-feeding. Small amounts of Qualequin can pass into the breast milk, but no problems with this medicine have been reported in nursing babies. Discuss with your doctor whether you should breastfeed while taking Qualequin.

How should I take Qualequin?

- Take Qualequin exactly as prescribed.
- Qualequin is a clear capsule that is taken by mouth.
- Unless directed otherwise by your doctor, the usual dose is 648 mg (two 324 mg capsules) of Qualequin every 8 hours by mouth at the same time every day for 7 days.
- To lower the chance of stomach upset, take this medication WITH FOOD.
- Finish all the Qualequin that is prescribed even if you feel better. Do not stop taking the medication without talking to your doctor.
- Do not take more than the amount prescribed. Do not take more than 2 capsules at one time or more than 3 doses in one day. If you take more than the prescribed dose, call your doctor right away.

What should I do if I miss a dose?

If you forget to take Qualequin, do NOT double the next dose. If it has been more than 4 hours since the missed dose, WAIT and take the regular dose at the next scheduled time. Call your doctor if you are not sure what to do.

What are the possible side effects of Qualequin?

The most common side effects that you may have when taking Qualequin are not usually serious, and will usually get better when Qualequin is stopped. Common side effects with Qualequin include:

- Headache
- Sweating
- Ringing in your ears
- Dizziness
- Change in color vision
- Nausea
- Flushing
- Mild hearing loss
- Blurred vision

Patient Information:
QUALAQUIN®
quinine sulfate
CAPSULES USP 324 mg

This leaflet contains a summary of the most important information about Qualequin capsules and should be read completely before starting your treatment. This leaflet does not replace talking to your doctor or health care provider about your treatment or medical condition. If you have any questions about your treatment or medical condition, ask your doctor. Only your doctor or other health care provider can prescribe Qualequin and determine if it is right for you.

Malaria is a serious infection, and if not treated, can be life-threatening. Quinine Sulfate has been used for many years as an effective treatment for uncomplicated malaria caused by the parasite *Plasmodium falciparum*.

What is Qualequin?

Qualequin is a prescription medication used in the treatment of uncomplicated malaria caused by the parasite *Plasmodium falciparum*.

Qualequin is **NOT** approved for the prevention of malaria or for the prevention or treatment of night-time leg cramps.

Who should not take Qualequin?

Do not take Qualequin if you:

- Had previous allergic reactions to quinine, quinidine, or mefloquine (Lariam®).
- Had previous serious side effects to quinine, such as decreased platelets, which are components of blood necessary for clotting.
- Have low levels of an enzyme called Glucose-6-phosphate dehydrogenase (G-6-PD).
- Have myasthenia gravis.
- Have optic neuritis, which is an inflammation of the nerve important for vision.
- Have certain heart rhythm problems or certain inherited abnormalities on your electrocardiogram (ECG). Your doctor will tell you whether your ECG has these abnormalities.

What should I tell my doctor or health care provider before taking Qualequin?

Tell your doctor or health care provider:

- About *all your medical conditions*, including any heart, kidney, or liver problems.
- About all the prescription and non-prescription medications you are taking, including vitamins and herbal medications.
- If you are pregnant or could be pregnant. Treatment of malaria is important because it can be a serious disease for a pregnant woman and her unborn baby. Your doctor can tell you more about the benefits and risks of taking this medication during pregnancy for uncomplicated malaria. You and your doctor can decide if Qualequin is right for you.
- If you are breast-feeding. Small amounts of Qualequin can pass into the breast milk, but no problems with this medicine have been reported in nursing babies. Discuss with your doctor whether you should breastfeed while taking Qualequin.

How should I take Qualequin?

- Take Qualequin exactly as prescribed.
- Qualequin is a clear capsule that is taken by mouth.
- Unless directed otherwise by your doctor, the usual dose is 648 mg (two 324 mg capsules) of Qualequin every 8 hours by mouth at the same time every day for 7 days.
- To lower the chance of stomach upset, take this medication WITH FOOD.
- Finish all the Qualequin that is prescribed even if you feel better. Do not stop taking the medication without talking to your doctor.
- Do not take more than the amount prescribed. Do not take more than 2 capsules at one time or more than 3 doses in one day. If you take more than the prescribed dose, call your doctor right away.

What should I do if I miss a dose?

If you forget to take Qualequin, do NOT double the next dose. If it has been more than 4 hours since the missed dose, WAIT and take the regular dose at the next scheduled time. Call your doctor if you are not sure what to do.

What are the possible side effects of Qualequin?

The most common side effects that you may have when taking Qualequin are not usually serious, and will usually get better when Qualequin is stopped. Common side effects with Qualequin include:

- Headache
- Sweating
- Ringing in your ears
- Dizziness
- Change in color vision
- Nausea
- Flushing
- Mild hearing loss
- Blurred vision

Patient Information:
QUALAQUIN®
quinine sulfate
CAPSULES USP 324 mg

This leaflet contains a summary of the most important information

Occasionally, more severe symptoms such as vomiting, diarrhea, and abdominal pain may occur. Rarely, rapid or irregular heart beat, severe hearing loss, or blindness, may occur. If you experience any severe side effects, call your doctor.

Some patients may experience low blood sugar (hypoglycemia) while taking Quaaliquin. Symptoms of low blood sugar include light-headedness, dizziness, sweating, confusion, shakiness, anxiety, and weakness. If you experience symptoms of low blood sugar, drink some fruit juice or eat a snack, and call your doctor.

Elderly patients may be more sensitive to the side effects of Quaaliquin than younger patients, and should quickly report any side effects to their doctor.

Quaaliquin has other less common side effects that are not listed here. For a complete list of side effects, ask your doctor. If you notice any side effects not mentioned in this leaflet, or if you have any concerns about a side effect you are having, talk to your doctor.

Quaaliquin is **NOT** approved for the treatment of leg cramps because quinine has not been proven to work for this condition, and may cause serious or life-threatening side effects. Some of the more serious side effects of quinine are blindness, deafness, and abnormal heart rhythm. Your doctor can tell you additional information about serious side effects reported with quinine.

Call your doctor or health care provider right away if:

- You feel worse; or if you do not start feeling better within a day or two of taking Quaaliquin.
- If your fevers come back after completing treatment with Quaaliquin, call your doctor to make sure that the malaria has not returned.
- You experience serious problems such as:
 - o **Serious allergic reactions:** rash, hives, severe itching, severe flushing, trouble breathing.
 - o **Eyesight problems:** blurred vision, double vision, blindness.
 - o **Heart problems:** chest pain, rapid heart beats, abnormal heart rhythm.
 - o **Other reactions:** dizziness, confusion, lightheadedness, fainting, seizure.
 - o **Other problems:** abnormal bleeding, (such as severe nosebleed, and blood in the urine, or stool), severe bruising, or the appearance of unusual purple-brown or red spots on your skin.

What about other medications I am taking?

- Tell your doctor about all other prescription and non-prescription medications you are taking, including vitamins and herbal supplements.
- Certain medications should be avoided when you are taking Quaaliquin.
- Your doctor has a list of medications that should be avoided or which may require special precautions while taking Quaaliquin.

How do I store Quaaliquin?

Keep Quaaliquin out of reach of children. Keep the capsules in a tightly closed container. Do not refrigerate or freeze. Store at 25-30°C (77-86°F).

General advice about Quaaliquin:

Do not use Quaaliquin for a condition for which it was not prescribed. Do NOT give Quaaliquin to other people, even if they have the same symptoms, because it may be harmful.

This leaflet highlights the most important information about Quaaliquin. For more information, you should talk with your doctor or health care provider.

Active Ingredients: Quinine Sulfate, USP
Inactive Ingredients: Corn starch, magnesium stearate, talc

Revised: August 2007S

Occasionally, more severe symptoms such as vomiting, diarrhea, and abdominal pain may occur. Rarely, rapid or irregular heart beat, severe hearing loss, or blindness, may occur. If you experience any severe side effects, call your doctor.

Some patients may experience low blood sugar (hypoglycemia) while taking Quaaliquin. Symptoms of low blood sugar include light-headedness, dizziness, sweating, confusion, shakiness, anxiety, and weakness. If you experience symptoms of low blood sugar, drink some fruit juice or eat a snack, and call your doctor.

Elderly patients may be more sensitive to the side effects of Quaaliquin than younger patients, and should quickly report any side effects to their doctor.

Quaaliquin has other less common side effects that are not listed here. For a complete list of side effects, ask your doctor. If you notice any side effects not mentioned in this leaflet, or if you have any concerns about a side effect you are having, talk to your doctor.

Quaaliquin is **NOT** approved for the treatment of leg cramps because quinine has not been proven to work for this condition, and may cause serious or life-threatening side effects. Some of the more serious side effects of quinine are blindness, deafness, and abnormal heart rhythm. Your doctor can tell you additional information about serious side effects reported with quinine.

Call your doctor or health care provider right away if:

- You feel worse; or if you do not start feeling better within a day or two of taking Quaaliquin.
- If your fevers come back after completing treatment with Quaaliquin, call your doctor to make sure that the malaria has not returned.
- You experience serious problems such as:
 - o **Serious allergic reactions:** rash, hives, severe itching, severe flushing, trouble breathing.
 - o **Eyesight problems:** blurred vision, double vision, blindness.
 - o **Heart problems:** chest pain, rapid heart beats, abnormal heart rhythm.
 - o **Other reactions:** dizziness, confusion, lightheadedness, fainting, seizure.
 - o **Other problems:** abnormal bleeding, (such as severe nosebleed, and blood in the urine, or stool), severe bruising, or the appearance of unusual purple-brown or red spots on your skin.

What about other medications I am taking?

- Tell your doctor about all other prescription and non-prescription medications you are taking, including vitamins and herbal supplements.
- Certain medications should be avoided when you are taking Quaaliquin.
- Your doctor has a list of medications that should be avoided or which may require special precautions while taking Quaaliquin.

How do I store Quaaliquin?

Keep Quaaliquin out of reach of children. Keep the capsules in a tightly closed container. Do not refrigerate or freeze. Store at 25-30°C (77-86°F).

General advice about Quaaliquin:

Do not use Quaaliquin for a condition for which it was not prescribed. Do NOT give Quaaliquin to other people, even if they have the same symptoms, because it may be harmful.

This leaflet highlights the most important information about Quaaliquin. For more information, you should talk with your doctor or health care provider.

Active Ingredients: Quinine Sulfate, USP
Inactive Ingredients: Corn starch, magnesium stearate, talc

Revised: August 2007S

Occasionally, more severe symptoms such as vomiting, diarrhea, and abdominal pain may occur. Rarely, rapid or irregular heart beat, severe hearing loss, or blindness, may occur. If you experience any severe side effects, call your doctor.

Some patients may experience low blood sugar (hypoglycemia) while taking Quaaliquin. Symptoms of low blood sugar include light-headedness, dizziness, sweating, confusion, shakiness, anxiety, and weakness. If you experience symptoms of low blood sugar, drink some fruit juice or eat a snack, and call your doctor.

Elderly patients may be more sensitive to the side effects of Quaaliquin than younger patients, and should quickly report any side effects to their doctor.

Quaaliquin has other less common side effects that are not listed here. For a complete list of side effects, ask your doctor. If you notice any side effects not mentioned in this leaflet, or if you have any concerns about a side effect you are having, talk to your doctor.

Quaaliquin is **NOT** approved for the treatment of leg cramps because quinine has not been proven to work for this condition, and may cause serious or life-threatening side effects. Some of the more serious side effects of quinine are blindness, deafness, and abnormal heart rhythm. Your doctor can tell you additional information about serious side effects reported with quinine.

Call your doctor or health care provider right away if:

- You feel worse; or if you do not start feeling better within a day or two of taking Quaaliquin.
- If your fevers come back after completing treatment with Quaaliquin, call your doctor to make sure that the malaria has not returned.
- You experience serious problems such as:
 - o **Serious allergic reactions:** rash, hives, severe itching, severe flushing, trouble breathing.
 - o **Eyesight problems:** blurred vision, double vision, blindness.
 - o **Heart problems:** chest pain, rapid heart beats, abnormal heart rhythm.
 - o **Other reactions:** dizziness, confusion, lightheadedness, fainting, seizure.
 - o **Other problems:** abnormal bleeding, (such as severe nosebleed, and blood in the urine, or stool), severe bruising, or the appearance of unusual purple-brown or red spots on your skin.

What about other medications I am taking?

- Tell your doctor about all other prescription and non-prescription medications you are taking, including vitamins and herbal supplements.
- Certain medications should be avoided when you are taking Quaaliquin.
- Your doctor has a list of medications that should be avoided or which may require special precautions while taking Quaaliquin.

How do I store Quaaliquin?

Keep Quaaliquin out of reach of children. Keep the capsules in a tightly closed container. Do not refrigerate or freeze. Store at 25-30°C (77-86°F).

General advice about Quaaliquin:

Do not use Quaaliquin for a condition for which it was not prescribed. Do NOT give Quaaliquin to other people, even if they have the same symptoms, because it may be harmful.

This leaflet highlights the most important information about Quaaliquin. For more information, you should talk with your doctor or health care provider.

Active Ingredients: Quinine Sulfate, USP
Inactive Ingredients: Corn starch, magnesium stearate, talc

Revised: August 2007S

Grapefruit juice (CYP3A4 inhibitor): In a pharmacokinetic study involving 10 healthy volunteers, the administration of a single 600 mg dose of quinine sulfate with grapefruit juice (full-strength or half-strength) did not significantly alter the pharmacokinetic parameters of quinine. Quaaliquin may be taken with grapefruit juice.

Histamine H₂-receptor blockers (cimetidine, ranitidine): In healthy volunteers who were given a single oral 600 mg dose of quinine sulfate after pretreatment with cimetidine (200 mg three times daily and 400 mg at bedtime for 7 days) or ranitidine (150 mg twice daily for 7 days), the apparent oral clearance of quinine decreased and the mean elimination half-life increased significantly when given with cimetidine but not with ranitidine. Compared to untreated controls, the mean AUC of quinine increased by only 20% with ranitidine and by 42% with cimetidine (p<0.05) without a significant change in mean quinine C_{max}. When quinine is to be given concomitantly with a histamine H₂-receptor blocker, the use of ranitidine is preferred over cimetidine. Although cimetidine may be used concomitantly with Quaaliquin, patients should be monitored closely for adverse events associated with quinine.

Isoniazid: Isoniazid 300 mg/day pretreatment for 1 week did not significantly alter the pharmacokinetic parameters of quinine. Adjustment of Quaaliquin dosage is not necessary when isoniazid is given concomitantly.

Ketoconazole (CYP3A4 inhibitor): In a crossover study, healthy subjects (N=9) who received a single oral dose of quinine hydrochloride (500 mg) concomitantly with ketoconazole (100 mg twice daily for 3 days) had a mean quinine AUC that was higher by 45% and a mean oral clearance of quinine that was 31% lower than after receiving quinine alone. Although no change in the Quaaliquin dosage regimen is necessary with concomitant ketoconazole, patients should be monitored closely for adverse reactions associated with quinine.

Oral contraceptives (estrogen, progestin): In 7 healthy females who were using single-ingredient progestin or combination estrogen-containing oral contraceptives, the pharmacokinetic parameters of a single 600 mg dose of quinine sulfate were not altered in comparison to those observed in 7 age-matched female control subjects not using oral contraceptives.

Rifampin (CYP3A4 inducer): In patients with uncomplicated *P. falciparum* malaria who received quinine sulfate 10 mg/kg concomitantly with rifampin 15 mg/kg/day for 7 days (N=29), the median AUC of quinine between days 3 and 7 of therapy was 75% lower as compared to those who received quinine monotherapy. In healthy volunteers (N=9) who received a single oral 600 mg dose of quinine sulfate after 2 weeks of pretreatment with rifampin 600 mg/day, the mean quinine AUC and C_{max} decreased by 85% and 55%, respectively. Therefore the concomitant administration of rifampin with Quaaliquin should be avoided. (See **WARNINGS**.)

Tetracycline: In 8 patients with acute uncomplicated *P. falciparum* malaria who were treated with oral quinine sulfate (600 mg every 8 hours for 7 days) in combination with oral tetracycline (250 mg every 6 hours for 7 days), the mean plasma quinine concentrations were about two-fold higher than in 8 patients who received quinine monotherapy. Although tetracycline may be concomitantly administered with Quaaliquin, patients should be monitored closely for adverse reactions associated with quinine sulfate.

Troleandomycin (CYP3A4 inhibitor): In a crossover study (N=10), healthy subjects who received a single oral 600 mg dose of quinine sulfate with the macrolide antibiotic, troleandomycin (500 mg every 8 hours) exhibited a 87% higher mean quinine AUC, a 45% lower mean oral clearance of quinine, and a 81% lower formation clearance of the main metabolite, 3-hydroxyquinine, than when quinine was given alone. Therefore, concomitant administration of troleandomycin with Quaaliquin should be avoided. (See **WARNINGS**.)

Urinary alkalinizers (acetazolamide, sodium bicarbonate): Urinary alkalinizing agents may increase plasma quinine concentrations.

Effect of Quinine on the Pharmacokinetics of Other Drugs
 Results of *in vivo* and *in vitro* drug interaction studies suggest that quinine has the potential to inhibit the metabolism of drugs that are substrates of CYP3A4 and CYP2D6, as well as inhibit the biliary excretion of drugs like digoxin.

In an *in vitro* induction study using human hepatocytes, quinine (5 to 30 µM) increased the metabolic activities of CYP1A2 and CYP3A4. Quinine did not significantly induce the activities of CYP2A6, CYP2B6, CYP2C8, CYP2C9, CYP2C19, CYP2D6, and CYP2E1.

Anticonvulsants (carbamazepine, phenobarbital, and phenytoin): A single 600 mg oral dose of quinine sulfate increased the mean plasma C_{max} and AUC₀₋₂₄ of single oral doses of carbamazepine (200 mg) and phenobarbital (120 mg) but not phenytoin (200 mg) in 8 healthy subjects. The mean AUC increases of carbamazepine, phenobarbital and phenytoin were 104%, 81% and 4%, respectively; the mean increases in C_{max} were 56%, 53%, and 4%, respectively. Mean urinary recoveries of the three antiepileptics over 24 hours were also profoundly increased by quinine. If concomitant administration with carbamazepine or phenobarbital cannot be avoided, frequent monitoring of anticonvulsant drug concentrations is recommended. Additionally, patients should be monitored closely for adverse reactions associated with these anticonvulsants. Carbamazepine, phenobarbital, and phenytoin are CYP3A4 inducers and may decrease quinine plasma concentrations if used concurrently with Quaaliquin.

Astemizole (CYP3A4 substrate): Elevated plasma astemizole concentrations were reported in a subject who experienced torsades de pointes after receiving three doses of quinine sulfate for nocturnal leg cramps concomitantly with chronic astemizole 10 mg/day. The concurrent use of Quaaliquin with astemizole and other CYP3A4 substrates with QT prolongation potential (e.g., cisapride, terfenadine, halofantrine, pimozide and quinidine) should also be avoided. (See **WARNINGS**.)
Desipramine (CYP2D6 substrate): Quinine (750 mg/day for 2 days) decreased the metabolism of desipramine in patients who were extensive CYP2D6 metabolizers, but had no effect in patients who were poor CYP2D6 metabolizers. Lower doses (80 mg) of quinine did not significantly affect the pharmacokinetics of other CYP2D6 substrates, namely, drosiroquin, dextromethorphan, and methoxyphenamine. Although clinical drug interaction studies have not been performed, antimalarial doses (greater than or equal to 600 mg) of quinine may inhibit the metabolism of other drugs that are CYP2D6 substrates (e.g., flecainide, debrisoquine, dextromethorphan, metoprolol, paroxetine). Patients taking medications that are CYP2D6 substrates with Quaaliquin should be monitored closely for adverse reactions associated with these medications.

Digoxin: In 4 healthy subjects who received digoxin (0.5 to 0.75 mg/day) during treatment with quinine (750 mg/day), a 33% increase in mean steady state AUC of digoxin and a 35% reduction in the steady-state biliary clearance of digoxin were observed compared to digoxin alone. Thus, if Quaaliquin is administered to patients receiving digoxin, plasma digoxin concentrations should be closely monitored, and the digoxin dose adjusted, as necessary. (See **PRECAUTIONS**.)

Halofantrine: Although not studied clinically, quinine was shown to inhibit the metabolism of halofantrine *in vitro* using human liver microsomes. Therefore, concomitant administration of Quaaliquin is likely to increase plasma halofantrine concentrations. (See **WARNINGS**.)

Mefloquine: In 7 healthy subjects who received mefloquine (750 mg) at 24 hours before an oral 600 mg dose of quinine sulfate, the AUC of mefloquine was increased by 22% compared to mefloquine alone. In this study, the QTc interval was significantly prolonged in the subjects who received mefloquine and quinine sulfate 24 hours apart. The concomitant administration of mefloquine and Quaaliquin may produce electrocardiographic abnormalities (including QTc prolongation) and may increase the risk of seizures (See **WARNINGS**.)

Neuromuscular blocking agents (pancuronium, succinylcholine, tubocurarine): In one report, quinine potentiated neuromuscular blockade in a patient who received pancuronium during an operative procedure, and subsequently (3 hours after receiving pancuronium) received quinine 1800 mg daily. Quinine may also enhance the neuromuscular blocking effects of succinylcholine and tubocurarine. (See **WARNINGS**.)

Theophylline or aminophylline (CYP1A2 substrate): Although not studied clinically, quinine has been shown to induce the activity of CYP1A2 *in vitro* using human hepatocytes. Therefore, concomitant administration of Quaaliquin and theophylline or aminophylline is likely to decrease the plasma theophylline concentrations, possibly reducing the effect of theophylline or aminophylline. Plasma theophylline concentrations should be monitored frequently during concurrent therapy with theophylline or aminophylline and Quaaliquin.

Warfarin and oral anticoagulants: Cinchona alkaloids, including quinine, may have the potential to depress hepatic enzyme synthesis of vitamin K-dependent coagulation pathway proteins and may enhance the action of warfarin and other oral anticoagulants. Quinine may also interfere with the anticoagulant effect of heparin. Thus, in patients receiving warfarin, heparin, or other thrombin time (PT), partial thromboplastin time (PTT), or international normalization ratio (INR) should be closely monitored as appropriate, during concurrent therapy with Quaaliquin.
Drug/Laboratory Interactions: Quinine may produce an elevated value for urinary 17-ketogenic steroids when the Zimmerman method is used.

Carcinogenesis, Mutagenesis, Impairment of Fertility:
Carcinogenicity studies of quinine have not been conducted.
Genotoxicity studies of quinine were positive in the Ames bacterial mutation assay with metabolic activation and in the sister chromatid exchange assay in mice. There were non-positive genotoxicity findings in the sex-linked recessive lethal test performed in *Drosophila*, in the *in vivo* mouse micronucleus assay, and in the chromosomal aberration assay in mice and Chinese hamsters. Studies to evaluate the effect of quinine upon fertility in animals or in humans have not been conducted.
Pregnancy: Category C.
 There are no adequate and well-controlled studies in pregnant women.
 Hypoglycemia, due to increased pancreatic secretion of insulin, has been associated with quinine use, particularly in pregnant women.
 Quinine crosses the placenta and gives measurable blood concentrations in the fetus. In 9 women who delivered live infants 1 to 6 days after starting quinine therapy, placental cord plasma quinine concentrations were between 1.0 and 4.6 mg/L (mean 2.4 mg/L) and the mean (±SD) ratio of cord plasma to maternal plasma quinine concentrations was 0.32 ± 0.14. (See **CLINICAL PHARMACOLOGY**.)
 Quinine levels in the fetus may not be therapeutic. If congenital malaria is suspected after delivery, the infant should be evaluated and treated appropriately.
 Rare and isolated case reports describe deafness and optic nerve hypoplasia in children exposed *in utero* due to maternal ingestion of quinine.
 A study from Thailand (1999) of women with *P. falciparum* malaria who were treated with oral quinine sulfate 10 mg/kg 3 times daily for 7 days at anytime in pregnancy reported no significant difference in the rate of stillbirths at >28 weeks of gestation in women treated with quinine (10 of 633 women [1.6%]) as compared with a control group without malaria or exposure to antimalarial drugs during pregnancy (40 of 2201 women [1.8%]). The overall rate of congenital malformations (9 of 633 offspring [1.4%]) was not different for women who were treated with quinine sulfate compared with the control group (38 of 2201 offspring [1.7%]). The spontaneous abortion rate was higher in the control group (10.9%) than in women treated with quinine sulfate (3.5%) [OR = 3.1; 95% CI 2.1-4.7].
 In an epidemiologic survey that included 104 mother-child pairs exposed to quinine during the first 4 months of pregnancy, no increased risk of structural birth defects was seen (2 fetal malformations [1.9%]). *P. falciparum* malaria carries a higher risk of mortality and morbidity in pregnant women than in the general population. Pregnant women with *P. falciparum* malaria have an increased incidence of fetal loss (including spontaneous abortion and stillbirth), preterm labor and delivery, intrauterine growth retardation, low birth weight, and maternal death. Therefore, treatment of malaria in pregnancy is important. Quaaliquin should be used during pregnancy only if the potential benefit justifies the potential risk to the fetus. The risks and benefits of alternative treatments should be considered. If Quaaliquin is used during pregnancy if the patient becomes pregnant while taking this drug, the patient should be apprised of the potential hazards to the fetus.

Teratogenic effects have been demonstrated in some animal species but not in others when quinine was given by the subcutaneous or intramuscular route at dose levels in the same range as the maximum recommended human dose. Teratogenic effects were observed in rabbits (death *in utero*, degenerated auditory nerve and spiral ganglion, and CNS anomalies such as anencephaly and microcephaly), in mice (death *in utero*), guinea pigs (hemorrhage and mitochondrial changes in cochlea), and chinchillas (death and growth suppression *in utero* and CNS anomalies, such as anencephaly and microcephaly). There were no teratogenic findings in mice, rats, and monkeys.

Labor and Delivery: There is no evidence that quinine causes uterine contractions at the doses recommended for the treatment of malaria. In doses several-times higher than those used to treat malaria, quinine may stimulate the pregnant uterus.

Nursing Mothers: There is limited information on the safety of quinine in breastfed infants. No toxicity was reported in infants in a single study where oral quinine sulfate (10 mg/kg every 8 hours for 1 to 10 days) was administered to 25 lactating women. It is estimated from this study that breastfed infants would receive less than 2 to 3 mg per day of quinine base (< 0.4% of the maternal dose) *via* breast milk (See **CLINICAL PHARMACOLOGY**.)
 Although quinine is generally considered compatible with breastfeeding, the risks and benefits to infant and mother should be assessed.
 If malaria is suspected in the infant, appropriate evaluation and treatment should be provided. Plasma quinine levels may not be therapeutic in infants of nursing mothers receiving Quaaliquin.

Pediatric Use: The safety and efficacy of Quaaliquin in pediatric patients under the age of 16 has not been established.
Geriatric Use: Clinical studies of quinine sulfate did not include sufficient numbers of subjects aged 65 and over to determine whether they respond differently from younger subjects. Other reported clinical experience has not identified differences in responses between the elderly and younger patients.

ADVERSE REACTIONS
 Quinine can adversely affect almost every body system. The most common adverse events associated with quinine use are a cluster of symptoms called "cinchonism", which occurs to some degree in virtually all patients taking quinine. Symptoms include blurred vision, tinnitus, dizziness, sweating, nausea, vertigo, hearing impairment, and disturbance in color perception. More severe symptoms of cinchonism are vomiting, diarrhea, abdominal pain, deafness, blindness, and disturbances in cardiac rhythm or conduction. Most symptoms of cinchonism are reversible and resolve with discontinuation of quinine.

The following ADVERSE REACTIONS have been reported with quinine sulfate. Most of these reactions are thought to uncommon, but some are life threatening. (See **WARNINGS**.)

General: fever, chills, sweating, flushing, asthenia, lupus-like syndrome, and hypersensitivity reactions (See **WARNINGS** and **PRECAUTIONS**.)
Hematologic: agranulocytosis, hypoprothrombinemia, thrombocytopenia, disseminated intravascular coagulation, hemolytic anemia; hemolytic uremic syndrome, thrombotic thrombocytopenic purpura, idiopathic thrombocytopenic purpura, psoriasis, ecchymosis, hemorrhage, coagulopathy, blackwater fever, leukopenia, neutropenia, pancytopenia, aplastic anemia, and lupus anticoagulant.
Neuropsychiatric: headache, diplopia, confusion, altered mental status, seizures, coma, disorientation, tremors, restlessness, ataxia, acute dystonic reaction, aphasia, and suicide.
Dermatologic: cutaneous rashes, including urticarial, papular, or scarlatinat rashes, pruritus, bullous dermatitis, exfoliative dermatitis, erythema multiforme, Stevens-Johnson syndrome, toxic epidermal necrolysis, fixed drug eruption, photosensitivity reactions, allergic contact dermatitis, acral necrosis, and cutaneous vasculitis.
Respiratory: asthma, dyspnea, pulmonary edema.
Cardiovascular: chest pain, vasodilatation, hypotension, postural hypotension, tachycardia, bradycardia, palpitations, syncope, atrioventricular block, atrial fibrillation, irregular rhythm, unifocal premature ventricular contractions, nodal escape beats, U waves, QT prolongation, ventricular fibrillation, ventricular tachycardia, and cardiac arrest. (See **WARNINGS**.)

Gastrointestinal: nausea, vomiting, diarrhea, abdominal pain, gastric irritation, and esophagitis.
Hepatobiliary: granulomatous hepatitis, hepatitis, jaundice, and abnormal liver function tests.
Metabolic: hypoglycemia and anorexia.
Musculoskeletal: myalgias and muscle weakness.
Renal: hemoglobinuria, renal failure, renal impairment, and acute interstitial nephritis.
Special Senses: visual disturbances, including blurred vision with scotomata, sudden loss of vision, photophobia, diplopia, night blindness, diminished visual fields, fixed pupillary dilatation, disturbed color vision, optic neuritis, blindness, vertigo, tinnitus, hearing impairment, and deafness.

DRUG ABUSE AND DEPENDENCE
 Tolerance, abuse, or dependence with quinine sulfate has not been reported.

OVERDOSAGE
 Quinine overdose can be associated with serious complications, including visual impairment, hypoglycemia, cardiac arrhythmias, and death. Visual impairment can range from blurred vision and defective color perception, to visual field constriction and permanent blindness. Cinchonism occurs in virtually all patients with quinine overdose. Symptoms range from headache, nausea, vomiting, abdominal pain, diarrhea, tinnitus, vertigo, hearing impairment, sweating, flushing, and blurred vision, to deafness, blindness, serious cardiac arrhythmias, hypotension, and circulatory collapse. Central nervous system toxicity (drowsiness, disturbances of consciousness, ataxia, convulsions, respiratory acidosis, hemolysis, coma) has also been reported with quinine overdose, as well as pulmonary edema and adult respiratory distress syndrome.

Most toxic reactions are dose-related; however some reactions may be idiosyncratic because of the variable sensitivity of patients to the toxic effects of quinine. A lethal dose of quinine has not been clearly defined, but fatalities have been reported after the ingestion of 2 to 8 grams in adults. Quinine, like quinidine, has class I antiarrhythmic properties. The cardiotoxicity of quinine is due to its negative inotropic action, and to its effect on cardiac conduction, resulting in decreased rates of depolarization and conduction, and increased action potential and effective refractory period. ECG changes observed with quinine overdose include sinus tachycardia, PR prolongation, T wave inversion, bundle branch block, an increased QT interval, and a widening of the QRS complex. Quinine's alpha-blocking properties may result in hypotension and further exacerbate myocardial depression by decreasing coronary perfusion. Quinine overdose has been associated with hypotension, cardiogenic shock, and circulatory collapse, ventricular arrhythmias, including ventricular tachycardia, ventricular fibrillation, idioventricular rhythm, and torsades de pointes, as well as bradycardia, and atrioventricular block (See **WARNINGS, PRECAUTIONS, and ADVERSE EVENTS**.)
 Quinine is rapidly absorbed, and attempts to remove residual quinine sulfate from the stomach by gastric lavage may not be effective. Multiple-dose activated charcoal has been shown to decrease plasma quinine concentrations. (See **CLINICAL PHARMACOLOGY/Extracorporeal elimination**.)
 Forced acid diuresis, hemodialysis, charcoal peritoneal dialysis, and plasma exchange were not found to be effective in significantly increasing quinine elimination in a series of 16 patients.

DOSAGE AND ADMINISTRATION (SEE INDICATIONS AND USAGE)
 For treatment of uncomplicated *P. falciparum* malaria in adults, the Quaaliquin dosage is 648 mg (two capsules) every 8 hours for 7 days (See **CLINICAL STUDIES**.)

Quaaliquin should be taken with food to minimize gastric upset (See **CLINICAL PHARMACOLOGY**.)
For patients with hepatic impairment:
 In otherwise healthy subjects with Child-Pugh B hepatic impairment, the AUC of quinine increased by 55% compared to subjects with normal liver function. In patients with mild to moderate hepatic impairment (Child-Pugh A and Child-Pugh B, respectively), dosage reduction is not warranted but patients should be monitored closely for adverse reactions associated with quinine (See **CLINICAL PHARMACOLOGY/Special Populations**.) The effects of severe hepatic impairment (Child-Pugh C) on the safety of quinine sulfate are not known.

For patients with renal impairment:
 In otherwise healthy subjects with severe chronic renal failure not receiving any form of dialysis (mean serum creatinine = 9.6 mg/dL), the median plasma quinine exposure (AUC) increased by 195% compared to subjects with normal renal function. In patients with acute uncomplicated malaria and severe chronic renal failure, the following modified dosage regimen is recommended: one loading dose of 648 mg Quaaliquin followed 2 hours later by maintenance doses of 324 mg every 12 hours (See **CLINICAL PHARMACOLOGY/Special Populations**.) The effects of mild and moderate renal impairment on the pharmacokinetics and safety of quinine sulfate are not known.

HOW SUPPLIED:
 Quaaliquin capsules USP 324 mg are available as clear/clear capsules imprinted AR 102:
 Bottles of 30 NDC 13310-153-07
 Bottles of 100 NDC 13310-153-01
 Bottles of 500 NDC 13310-153-05
 Bottles of 1000 NDC 13310-153-10

Store at 25 – 30°C (77 – 86°F). Dispense in a light container as defined in the USP.

CLINICAL STUDIES
 Quinine has been used worldwide for hundreds of years in the treatment of malaria. Thorough searches of the published literature identified over 1300 references to the treatment of malaria with quinine, and from these, 21 randomized, active-controlled studies were identified which evaluated oral quinine monotherapy or combination therapy for treatment of uncomplicated *P. falciparum* malaria. Over 2300 patients from malaria-endemic areas were enrolled in these studies, and more than 1400 patients received oral quinine. The following conclusions were drawn from review of these studies:

In areas where multi-drug resistance of *P. falciparum* is increasing, such as Southeast Asia, cure rates with 7 days of oral quinine monotherapy were at least 80%; while cure rates for 7-days of oral quinine combined with an antimicrobial agent (tetracycline or clindamycin) were greater than 90%. In areas where multi-drug resistance of the parasite was not as widespread, cure rates with 7 days of quinine monotherapy ranged from 86 to 100%. Cure was defined as initial clearing of parasitemia within 7 days without recrudescence by day 28 after treatment initiation. *P. falciparum* malaria that is clinically resistant to quinine has been reported in some areas of South America, Southeast Asia, and Bangladesh, and quinine may not be as effective in those areas. Completion of a 7 day oral quinine treatment regimen may be limited by drug intolerance, and shorter courses (3 days) of quinine combination therapy have been used. However, the published data from randomized, controlled clinical trials for shorter regimens of oral quinine in conjunction with tetracycline, doxycycline, or clindamycin for treatment of uncomplicated *P. falciparum* malaria is limited, and these shorter course combination regimens may not be as effective as the longer regimens.

Manufactured for:
 AR SCIENTIFIC, INC.
 Philadelphia, PA 19124 USA
 by:
 MUTUAL PHARMACEUTICAL COMPANY, INC.
 Philadelphia, PA 19124 USA

Revised: August 2007S